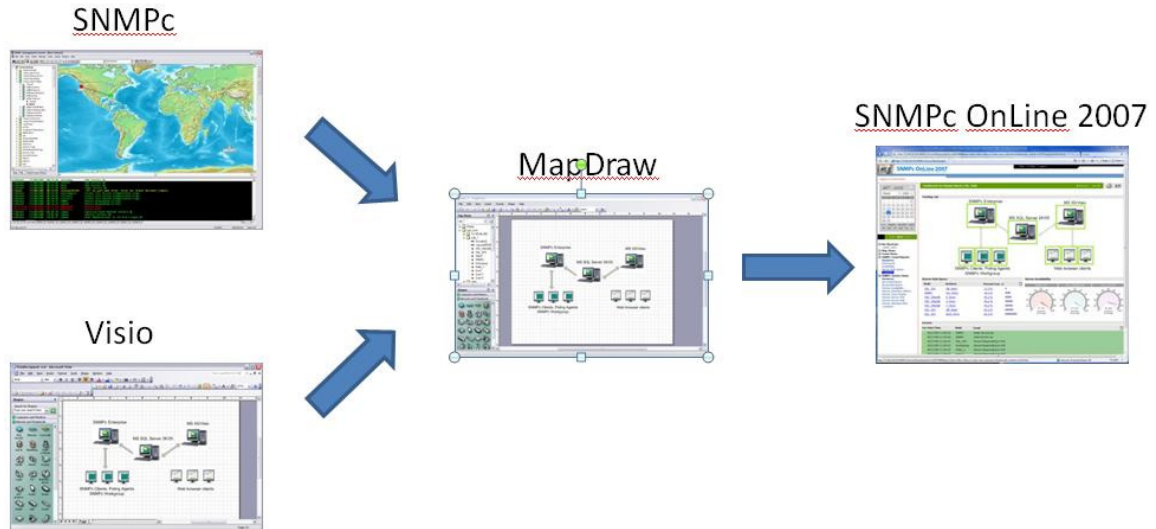


Using Mapdraw to create Visio Network Diagrams in SNMPc OnLine

MapDraw is a tool that allows you to associate SNMPc nodes, submaps and links with individual Visio icons. This allows you to create highly detailed maps which can be subsequently displayed within SNMPc OnLine.

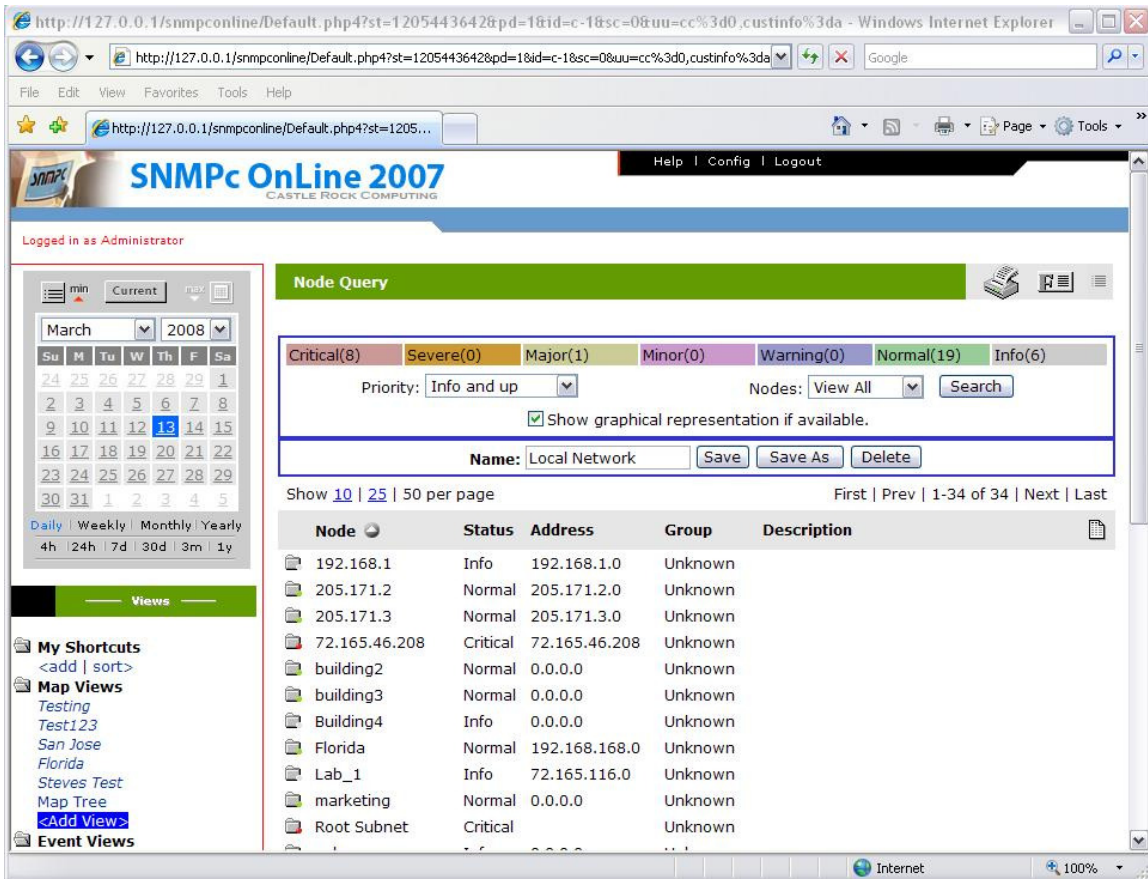


To use MapDraw you must be running the MapDraw application on the same machine as the SNMPc OnLine webserver, The MapDraw application also requires Microsoft Visio 2003 to be installed.

Creating a Map View in SNMPc OnLine

To create the combined network diagram you first create a 'Map View' within SNMPc OnLine. A Map View is the list of SNMPc nodes that will be available for association with the Visio objects in the MapDraw application. The Map View can reference every device in the map or a filtered subset. Filtering options include event severity level, submap, report group, IP address etc.

To create a Map View login into SNMPc OnLine 2007 and use the <Add View> option. This is available under the *Map Views* heading (highlighted below).



The screenshot shows the SNMPc OnLine 2007 web interface. The browser address bar shows the URL: `http://127.0.0.1/snmpconline/Default.php?st=1205443642&pd=1&id=c-1&sc=0&uu=cc%3d0,custinfo%3da`. The page title is "SNMPc OnLine 2007" by Castle Rock Computing. The user is logged in as Administrator. The main content area is titled "Node Query" and features a filter section with the following data:

Severity	Count
Critical	8
Severe	0
Major	1
Minor	0
Warning	0
Normal	19
Info	6

Below the filter section, there is a "Priority" dropdown set to "Info and up", a "Nodes" dropdown set to "View All", and a "Search" button. A checkbox for "Show graphical representation if available" is checked. The "Name" field contains "Local Network" with "Save", "Save As", and "Delete" buttons.

The table below shows a list of nodes:

Node	Status	Address	Group	Description
192.168.1	Info	192.168.1.0	Unknown	
205.171.2	Normal	205.171.2.0	Unknown	
205.171.3	Normal	205.171.3.0	Unknown	
72.165.46.208	Critical	72.165.46.208	Unknown	
building2	Normal	0.0.0.0	Unknown	
building3	Normal	0.0.0.0	Unknown	
Building4	Info	0.0.0.0	Unknown	
Florida	Normal	192.168.168.0	Unknown	
Lab_1	Info	72.165.116.0	Unknown	
marketing	Normal	0.0.0.0	Unknown	
Root Subnet	Critical		Unknown	

Once you select <Add View> you will then be able to use the Node Query screen (shown above) to select which devices are available for association. If you want all devices to be available then leave the 'Priority' and 'Nodes' settings at their default 'All' values; check 'Show graphical representation if available'; Give the Map View a *Name* and select *Save*.

If you wanted to create a MapView based on a Subnet of your SNMPc Network Map. change the 'Nodes' option to Subnet and make the appropriate choice via the pull down.

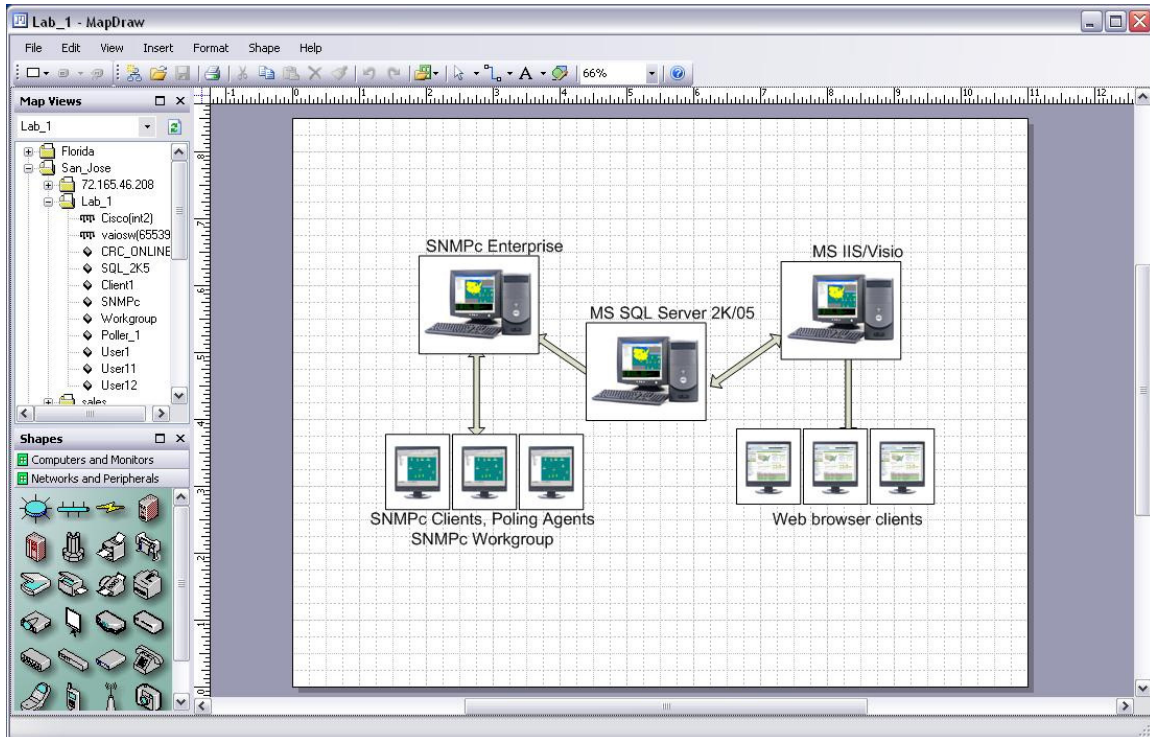
Critical(0)	Severe(0)	Major(0)	Minor(0)	Warning(0)	Normal(9)	Info(0)		
Priority: Info and up								
Nodes: Subnet								
Lab_1								
<input type="button" value="Search"/>								
<input checked="" type="checkbox"/> Show graphical representation if available.								
Order: 5	Name: Lab_1					<input type="button" value="Save"/>	<input type="button" value="Save As"/>	<input type="button" value="Delete"/>

Tip

Alternatively it is possible to create a new Map View directly from within MapDraw via the toolbar icon 'Create a new Map View in SNMPcOnLine'.

Using Mapdraw

MapDraw is launched via the top level Tools→MapDraw menu within SNMPc Enterprise. A screenshot below shows a typical MapDraw configuration.



If you have pre-existing Visio maps you can import them via the *File* → *Import* menu. Alternatively you can create or edit a map directly by using the familiar Visio controls. It is worth noting that as part of the Mapdraw/Visio integration common Visio tasks such as text boxes, background images etc are fully supported.

Associating Icons

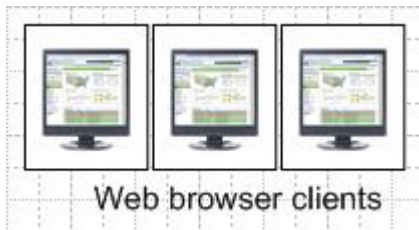
To associate a SNMPc object with a Visio icon or line simply highlight the name of the desired SNMPc object under 'Map Views' and then holding the left mouse button drag the object over the required Visio item. The cursor will change shape when you are in the right position.

Once a SNMPc node is associated with a Visio icon the display will change with a box drawn around the Visio icon. You will not see this box if you associate a line (such as a link between two icons). As default the 'association' box is displayed as a square. You can change the shape displayed via the toolbar options.

Before association



After association



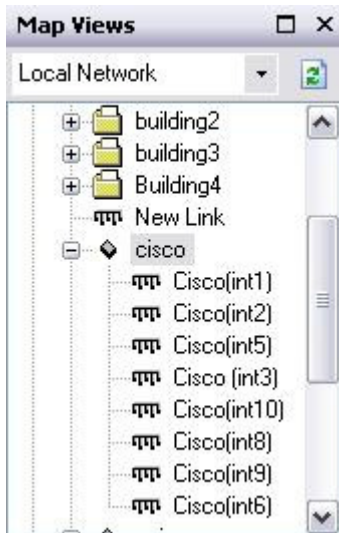
Tip

Some Visio icons that you import will not automatically associate with the SNMPc node. This is due to the grouping format used by the Visio icon. If you right-click on the icon ungroup it and then regroup it you should then be able to associate


To remove associations use the *Shape* → *Unlink SNMPc Node* menu or alternatively the toolbar icon.

Tip

If an SNMPc node is listed with a '+' sign this means that by clicking on the + you can expand the icon and associate individual interfaces.



Once you have created the map and associations save the combined image to SNMPc OnLine by using the *File → Save View Drawing* menu.

When you open SNMPc OnLine and select the Map View you created earlier you should now see the combined Visio/SNMPc network map. If you still see the standard node listing select the Format icon  and ensure that the 'Show graphical representation if available' option is checked.

It is worth noting that the map can be used as part of a custom dashboard as displayed below.

The screenshot shows the SNMPc OnLine 2007 web interface. The main dashboard area is titled "Dashboard1 for Monday March 17th, 2008". It features a central network diagram with the following components:

- SNMPc Enterprise**: A central server icon.
- MS SQL Server 2K/05**: A server icon connected to the SNMPc Enterprise.
- MS IIS/Visio**: A server icon connected to the MS SQL Server 2K/05.
- SNMPc Clients, Poling Agents, SNMPc Workgroup**: Three server icons connected to the SNMPc Enterprise.
- Web browser clients**: Three server icons connected to the MS IIS/Visio.

Below the diagram are several monitoring widgets:

- Server Disk Space**: A table showing disk usage for various nodes and instances.
- Server Availability**: Three gauges showing the availability of different services.
- Events**: A log of recent events.

Node	Instance	Percent Free
SQL_2K5	DB_Disk1	11.3 %
SNMPC	Sys_Drive	43.4 %
CRC_ONLINE	E_Drive	50.3 %
CRC_ONLINE	S_Drive	59.2 %
CRC_ONLINE	C_Drive	59.2 %
SQL_2K5	DB_Disk2	62.4 %
SQL_2K5	Boot Drive	95.4 %

SNMPC.Poll	CRC_ONLINE.Poll	SQL_2K5.Poll
97.797 cpPctOK Average	97.807 cpPctOK Average	90.044 cpPctOK Average

Cur Date/Time	Node	Event
03/17/08 11:49:43	SNMPC	SmtP Service Up
03/17/08 11:49:43	SNMPC	Web Service Up
03/17/08 11:49:33	SQL_2K5	Device Responding to Poll
03/17/08 11:49:33	Workgroup	Device Responding to Poll
03/17/08 11:49:33	Poller_1	Device Responding to Poll
03/17/08 11:49:33	Heur_1	Device Responding to Poll

Tip

If you create a Map View with the same name as a subnet in SNMPc then SNMPc OnLine will automatically link them together. This allows you to create a hierarchy of integrated Visio Network maps.

For example if you associate the SNMPc submap 'West Coast' with a Visio Icon. When the user clicks on that Visio icon SNMPc Oline will search for a created map view that is entitled 'West Coast'

Notes on Internet Browsers

Mapdraw is exporting the combined graphics in SVG (Scalable Vector Graphic) format. When viewing them it is recommended that you use Internet Explorer with the Adobe SVG viewer. When viewing the image for the first time IE will prompt you to download the SVG plugin if it is not already present on your system.

Although other browsers claim native SVG support (Firefox, Opera) our testing has shown that the IE/Adobe plugin route produces the best results. Some people have reported that you can configure Firefox and Opera to also use the Adobe Viewer but this has not been tested internally.

If you are using SNMPc OnLine on an intranet with no internet access for users to download the SVG Viewer you can choose to host the viewer plugin locally. To do this, edit the \Windows\PHP.INI file and add the line "SNMPc.SVGURL=/SNMPcOnLine/SVGVIEW.EXE" to the [SNMPc] section. The embedded object in the SNMPc OnLine Visio maps will refer to this url to download the plugin.